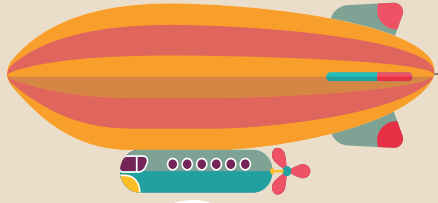


CHP BY THE NUMBERS: 1975 - 2015



Historical Overview

330,500
total people served

28,000
homes
weatherized

\$395 million
invested in
communities through
real estate
development

\$14.5 million
invested in
Resident
Services

36,000
participants received
energy efficiency
training

9,000
clients prepared for
homeownership

14,000
affordable homes
designed, built or
rehabbed