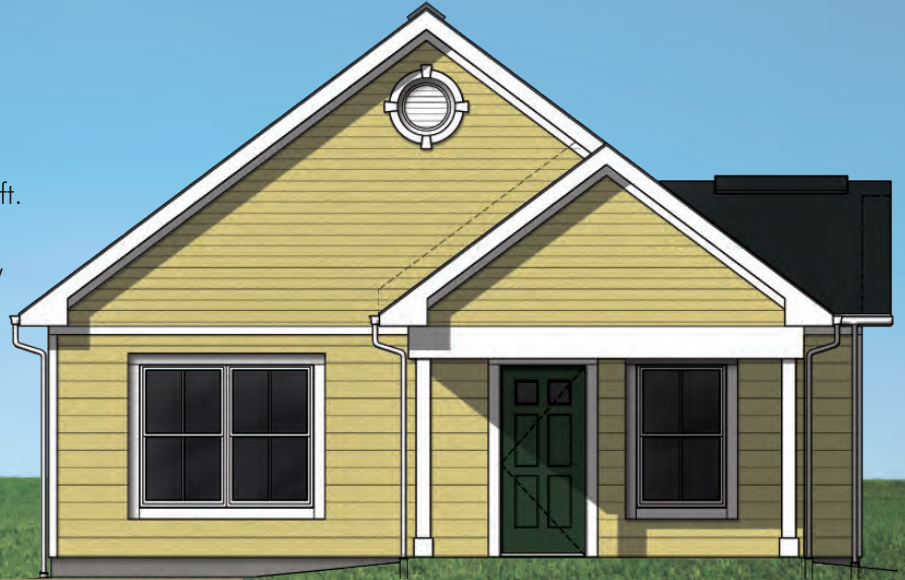


yes, you can own

your dream home

AMENITIES

- (4) Two Bedroom / 1 Bath Homes - 904 sq. ft.
- (2) Three Bedroom / 2 Bath Homes - 1,082 sq. ft.
- All homes will be built to EarthCraft standards and include energy efficient and environmentally friendly materials and products.
- Lots sizes about 1/5 acre
- Washer / Dryer / Refrigerator
- ENERGY STAR lighting



AFFORDABLE NEW HOMES IN PULASKI

- Perfect for first-time homebuyers; some clients find the monthly mortgage is the same or less than their current rent*
- Quality construction, energy efficient, environmentally-friendly
- In partnership with the Town of Pulaski's Dora Highway Neighborhood Revitalization Project
- Preference given to applicants who live or work in the Town of Pulaski

*Not typical in all cases. Dependent upon client's current rent and income level.

Community Housing Partners (CHP), a nonprofit provider of affordable housing and services for moderate-income individuals and families, has partnered with the Town of Pulaski to design and build six new homes in the Dora Highway neighborhood. This is an exciting homeownership opportunity for individuals, families and first-time homebuyers!

Interested applicants should contact our Homeownership Department at (540) 382-2002 ext. 3313 for additional information or visit CHP's website at www.communityhousingpartners.org.



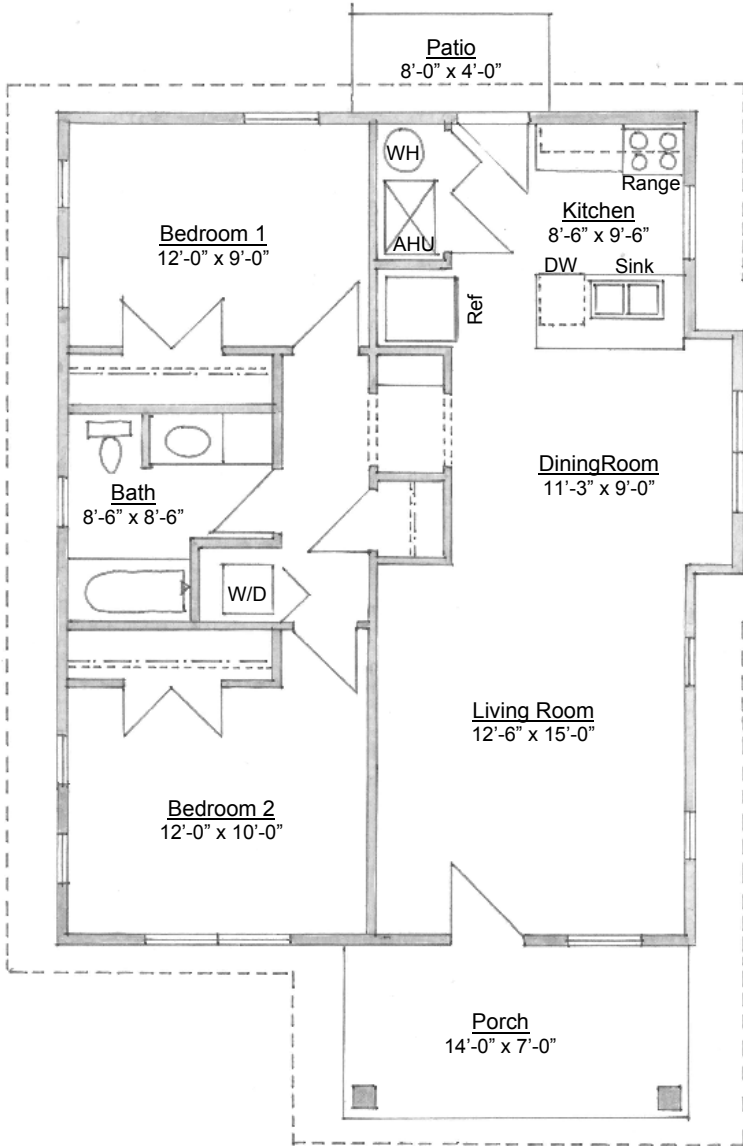
Virginia Department of Housing and Community Development
"Partners for Better Communities"



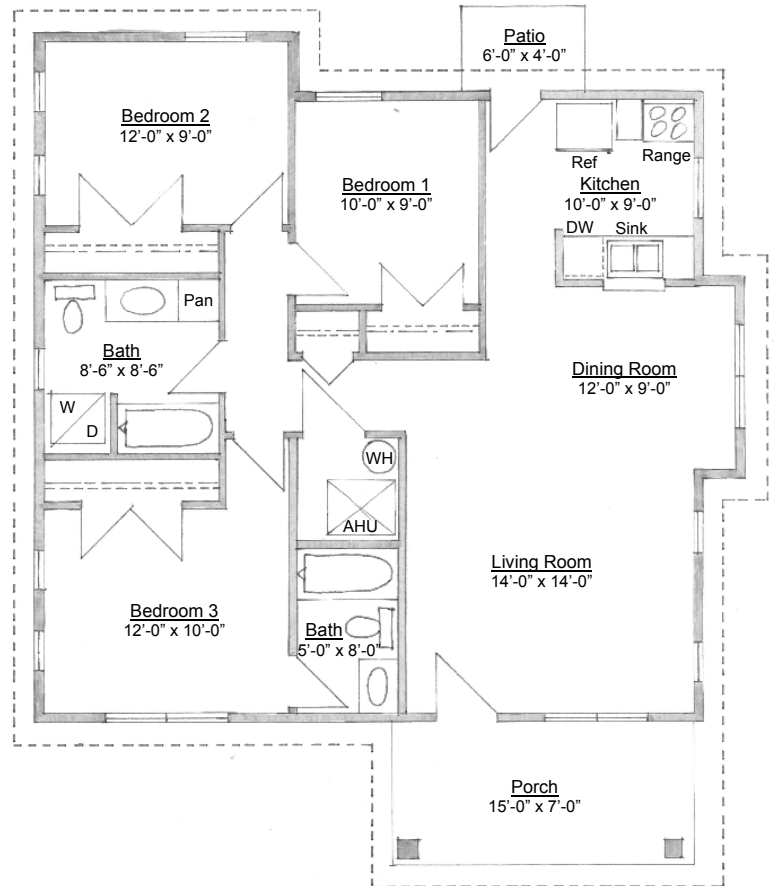
new river valley
HOME
CONSORTIUM



FLOOR PLANS & INCOME LIMITS



Pulaski Homes
Two Bedroom House Plan
 904 Sq. Ft.



Pulaski Homes
Three Bedroom House Plan
 Scale: 1/4" = 1'-0" 1082 Sq. Ft.

2011 Income Limits for Pulaski County

Household Size	1 Person	2 People	3 People	4 People	5 People	6 People	7 People
Pulaski County	\$30,800	\$35,200	\$39,600	\$44,000	\$47,550	\$51,050	\$54,600

Income limit data source: http://www.huduser.org/portal/datasets/il/index_il2010.html