

**Owner:**

Boodry Place, LLC

**General Contractor:**

Community Housing Partners

**Architect:**

Community Design Studio, LLC

**Resident Services:**

Community Housing, Inc.

**Size:**

32 one- and two-bedroom units  
36,853 total square feet on .84  
acres

**Resident Characteristics:**

- Units rented to senior citizens or families with a disabled family member earning at or below 50% of the area median income

**On-site Amenities:**

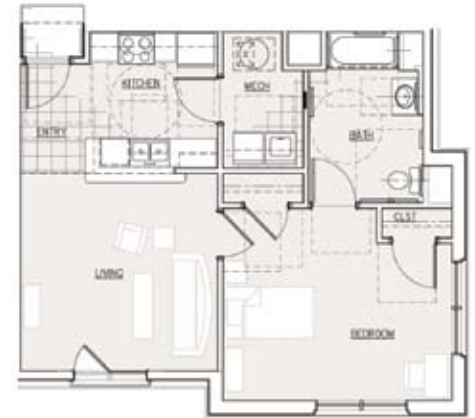
- Community center and playground for all abilities
- Handicap-accessible units

**Green Features:**

- Energy and water conservation measures
- Durable building materials and finishes
- Advanced framing techniques, air sealing measures, and high-performance buildings that reduce utility consumption
- Low VOC paints and finishes
- ENERGY STAR® appliances and windows

**Completion Date:**

Spring 2008



### Project Highlights

With partners Frontier Housing and the City of Morehead, Community Housing Partners (CHP) broke ground on CHP's first multi-family property in Kentucky. Located in downtown Morehead, these homes will be reserved for households of senior citizens with disabilities or families with a disabled child who earn 50% of the area median income.

The project utilizes universal design to promote accessibility for individuals of all ages and abilities. Unique features include a green space with a playground for children of all abilities, as well as a community space for health screenings and therapeutic services for physical, occupational and speech therapy.