

Owner:

Project Faith, Inc.

General Contractor:

Community Housing Partners

Architect:

Community Design Studio, LLC

Size:

- 32 total units, ranging from 860 -1,528 square feet

Resident Characteristics:

- Units rented to low- to moderate-wealth senior citizens

On-site Amenities:

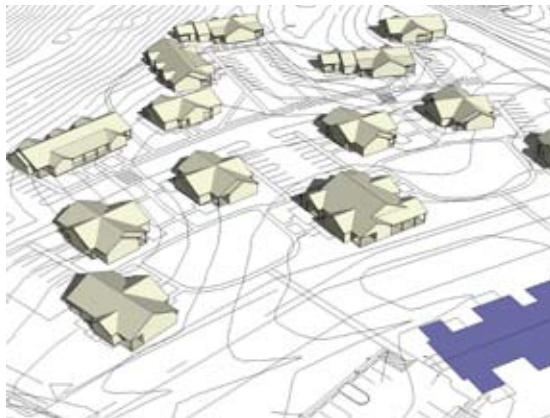
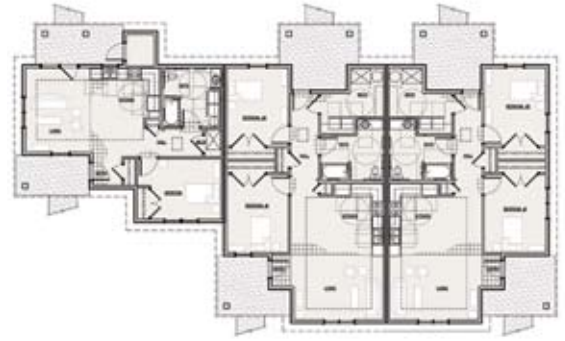
- Walking trails
- Universal Design features

Green Features:

- Designed to meet EarthCraft Virginia™ sustainable design standards
- Energy and water conservation measures
- Durable building materials and finishes
- Pedestrian-friendly site plan with relegated parking
- Advanced framing techniques, air sealing measures, and high-performance buildings
- ENERGY STAR® appliances and windows
- Low VOC paints and finishes

Estimated Completion Date:

2009



Project Highlights

Angelwood II is the second phase of a special-needs affordable housing development owned and operated by Project Faith in King George, Virginia. Project Faith is a non-profit organization that facilitates access to independent housing for persons with disabilities and elder individuals of low-income and low-wealth.

When completed, Angelwood II will consist of 32 single-floor apartments designed for accessible, "barrier free" living. The pedestrian-friendly neighborhood will feature common green areas that complete a strong network of pathways, trails, and sidewalks connected by two bridges to the first phase of the project.

The design and construction of Angelwood II will include green and sustainable features such as fiber cement siding; advanced framing techniques; energy-efficient appliances and fixtures; and low-volatile organic paints, adhesives, and sealants.

